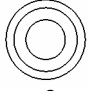
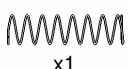
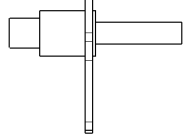
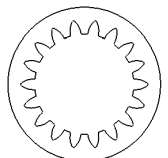
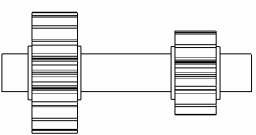


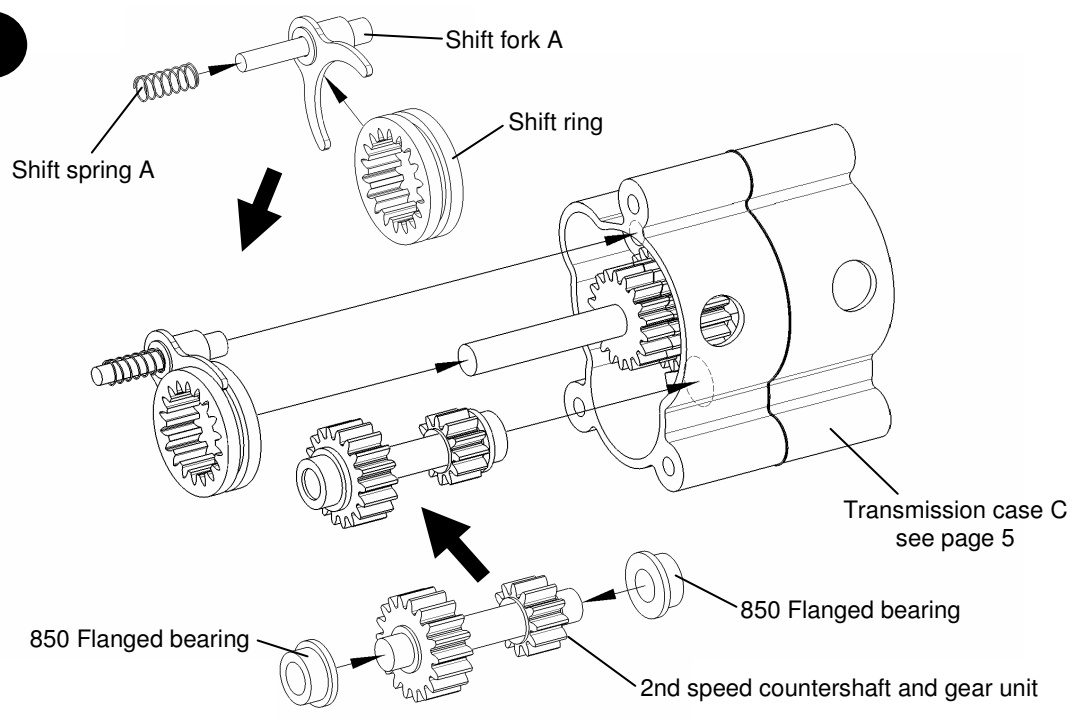
# Tamiya Bruiser Transmission Manual

(58048)

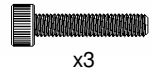
**1**

-  850 Flanged bearing  
x2
-  Shift spring A  
x1
-  Shift fork A  
x1
-  Shift ring  
x1
-  2nd speed countershaft and gear unit  
x1

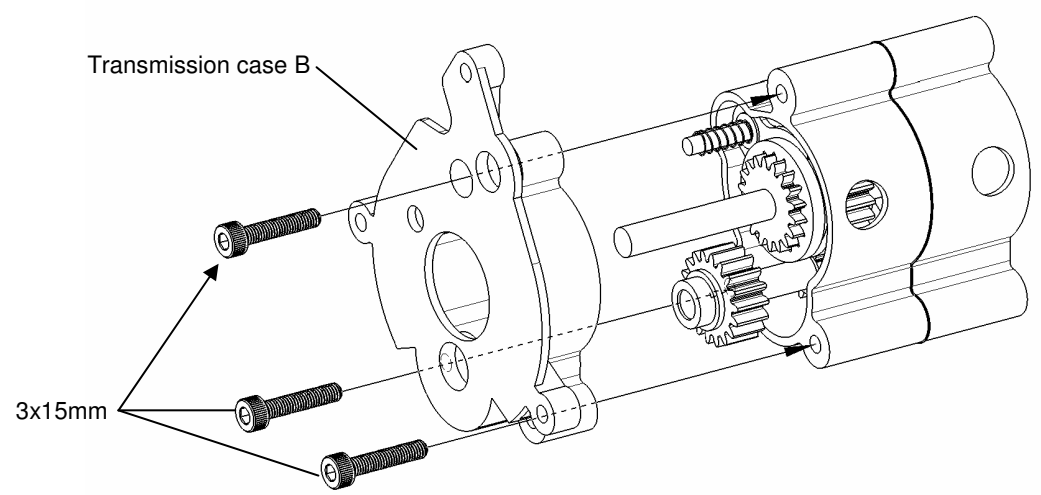
**1**



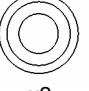

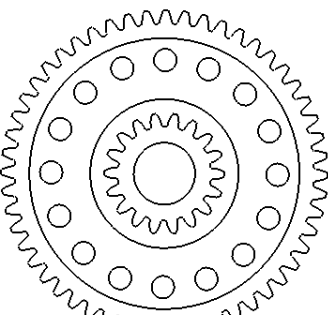
**2**

-  3x15mm Screw  
x3

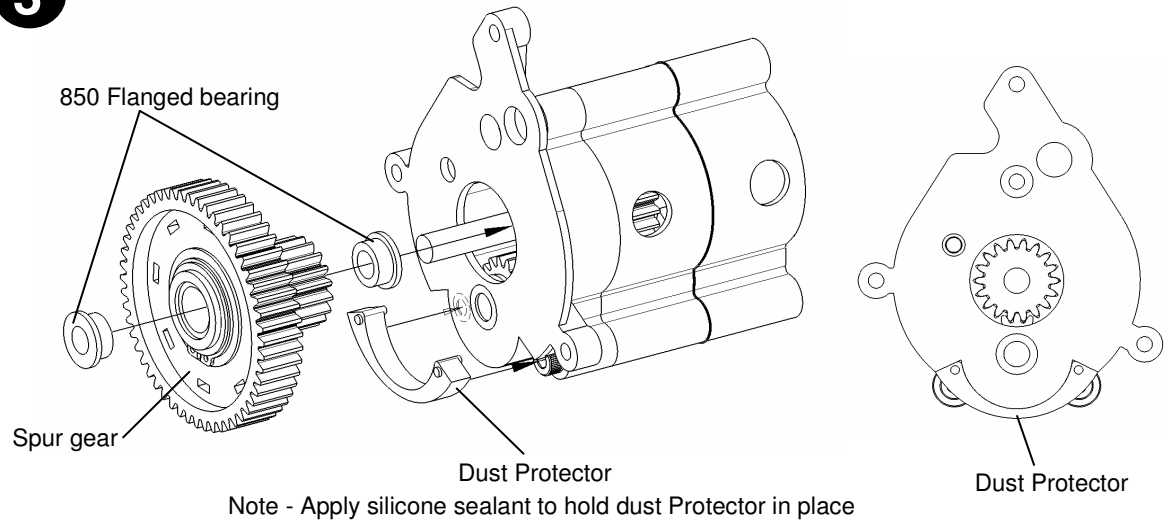
**2**



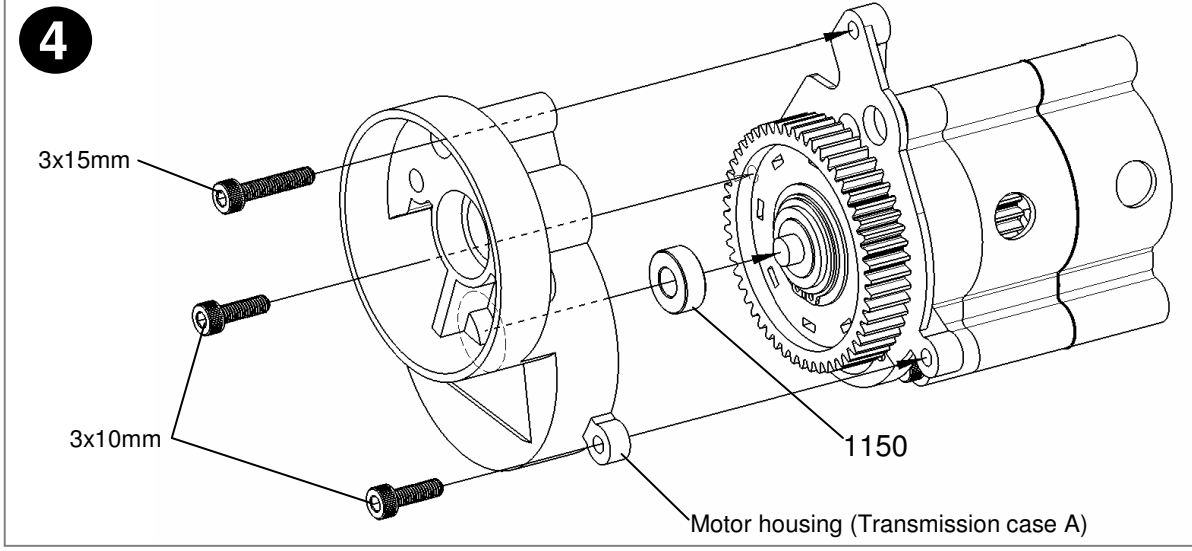
**3**

-  850 Flanged bearing  
x2
-  Dust Protector  
x1
-  Spur gear  
x1

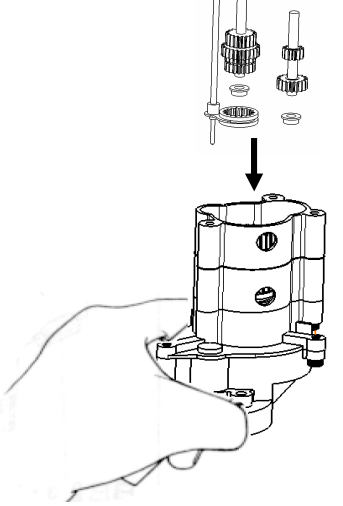
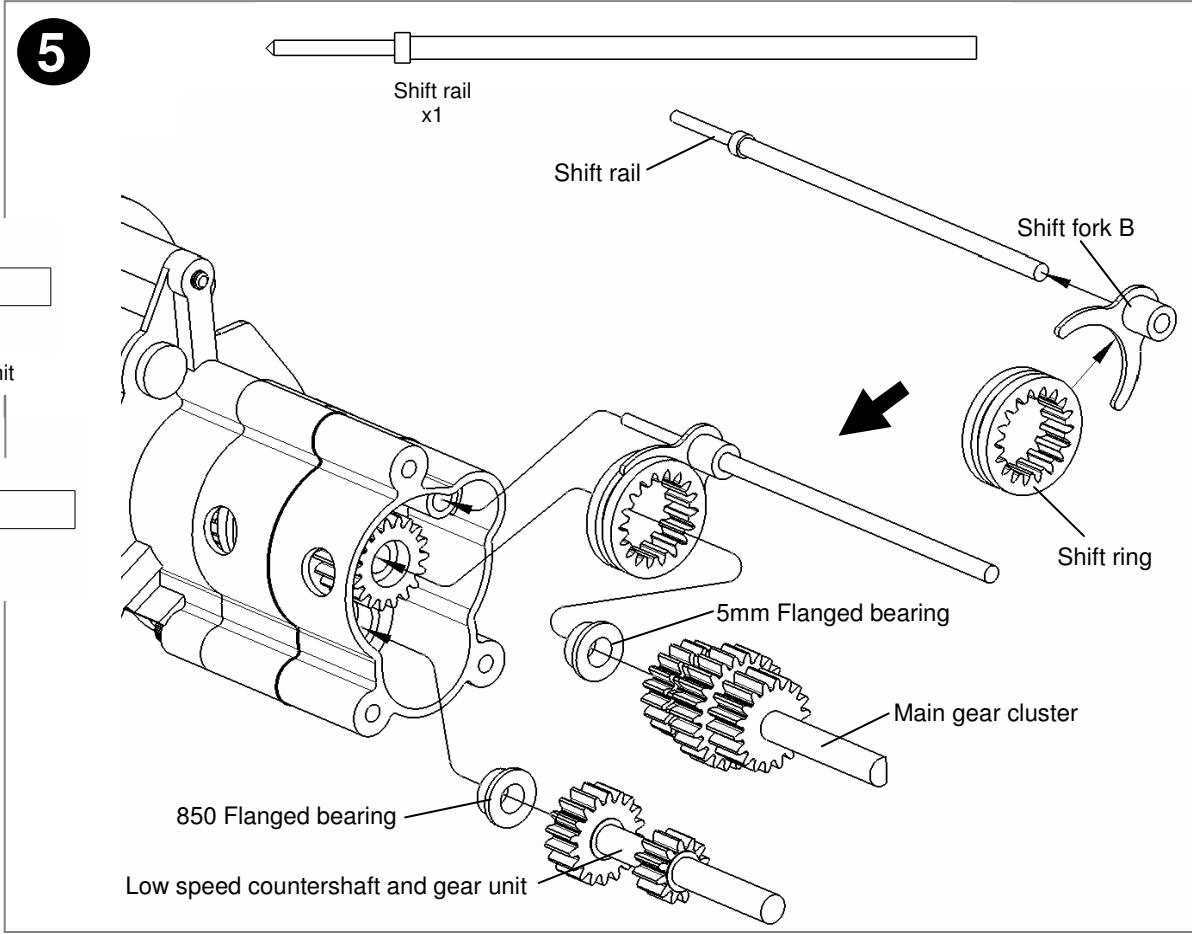
**3**



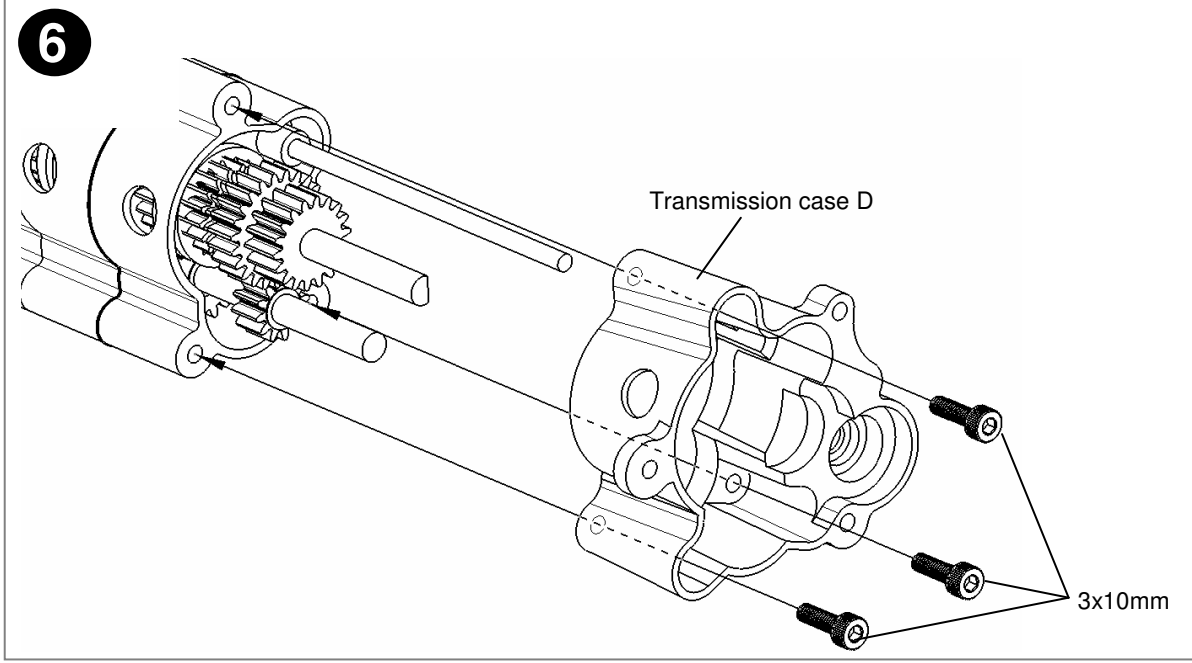
- 4**
- 3x10mm Screw x2
  - 3x15mm Screw x1
  - 1150 Metal bearing x1



- 5**
- x2
  - Shift fork B x1
  - Low speed countershaft and gear unit x1
  - Main gear cluster x1
  - Shift ring x1
- Recommended orientation for easy assembly
- 



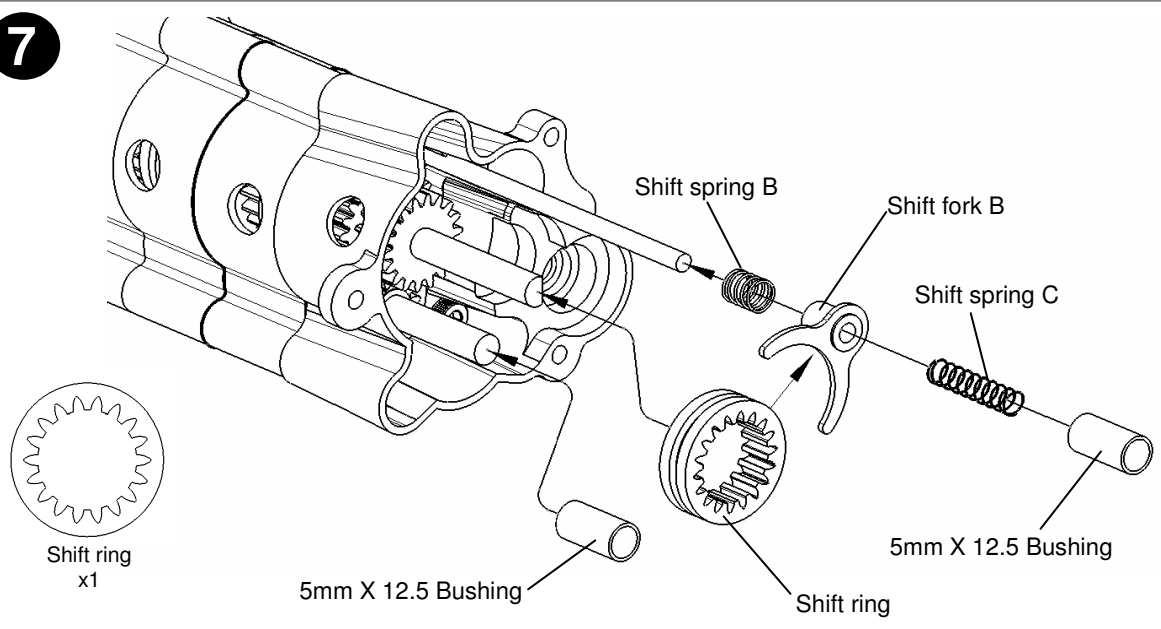
- 6**
- 3x10mm Screw x3



7

- 5mm X 12.5 Bushing x2
- Shift spring B x1
- Shift spring C x1
- Shift fork B x1

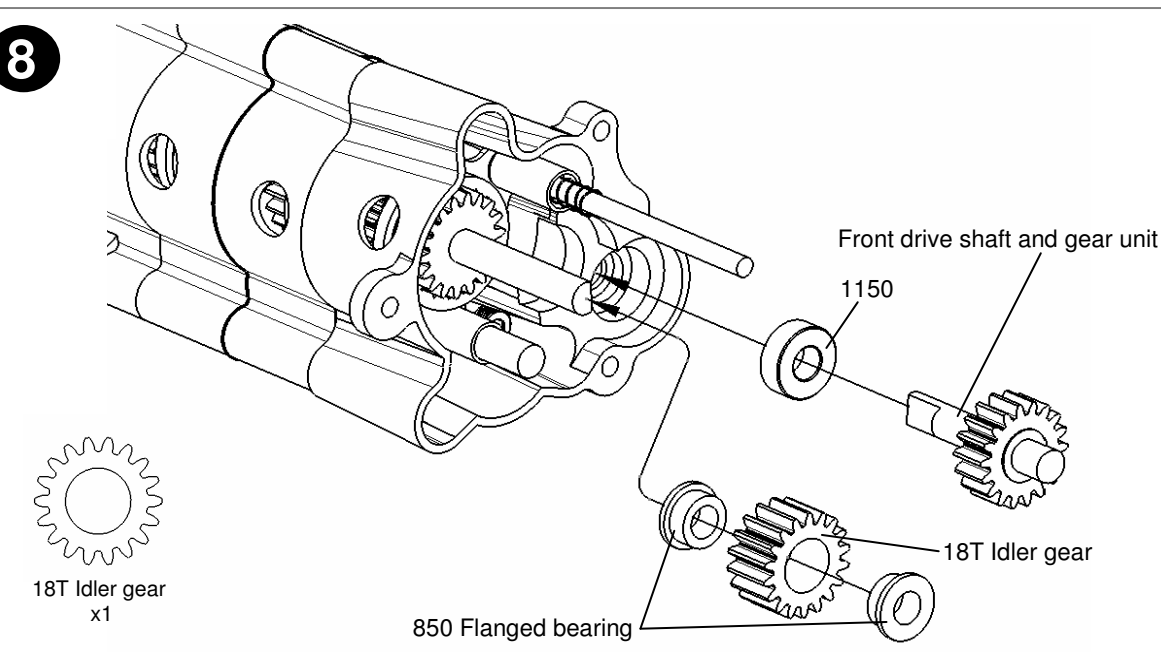
7



8

- 1150 Metal bearing x1
- 850 Flanged bearing x2
- Front drive shaft and gear unit x1
- 18T Idler gear x1

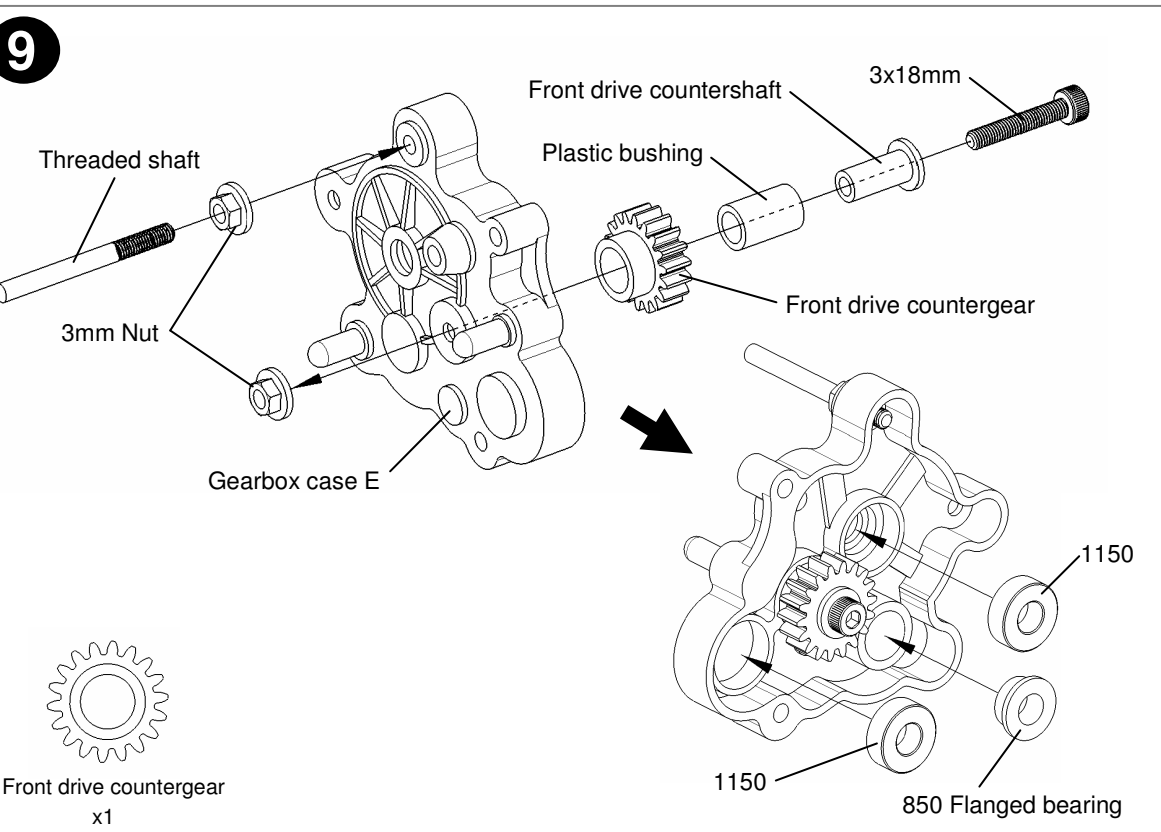
8



9

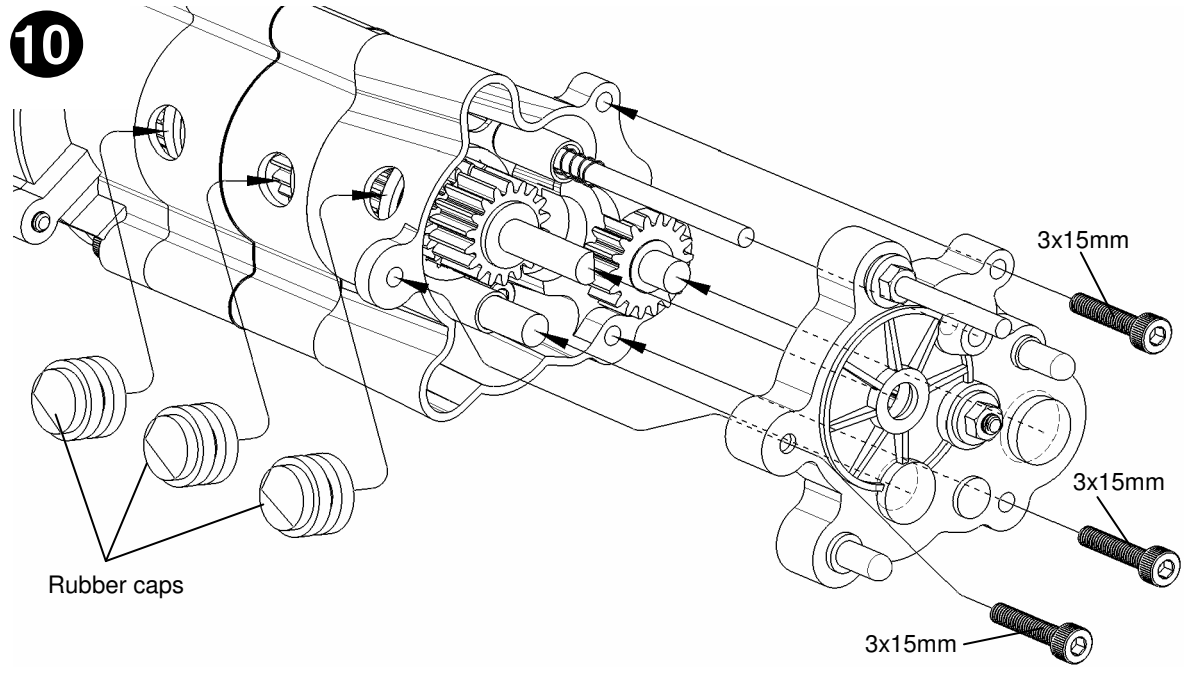
- 1150 Metal bearing x2
- 850 Flanged bearing x1
- 3mm Flanged nut x2
- 3x18mm Screw x1
- Front drive countershaft x1
- Plastic bushing x1
- Threaded shaft x1

9



10

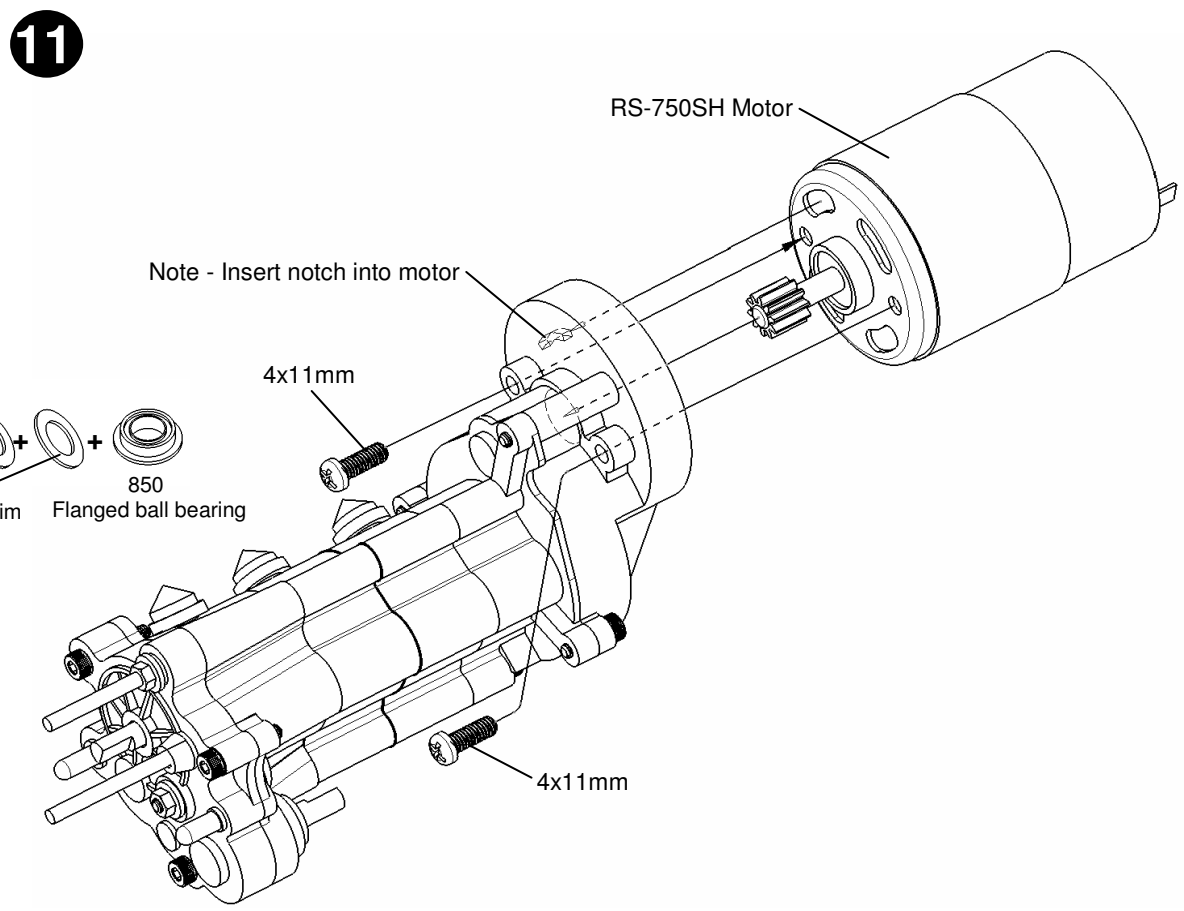
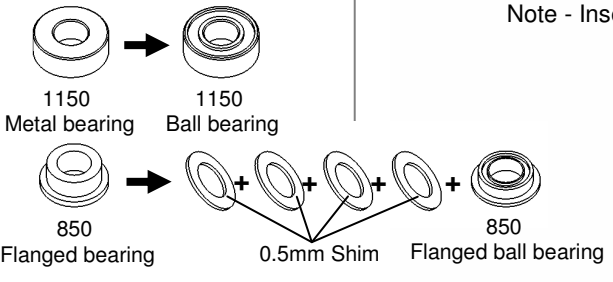
- 3x15mm Screw x3
- Rubber cap x3



11

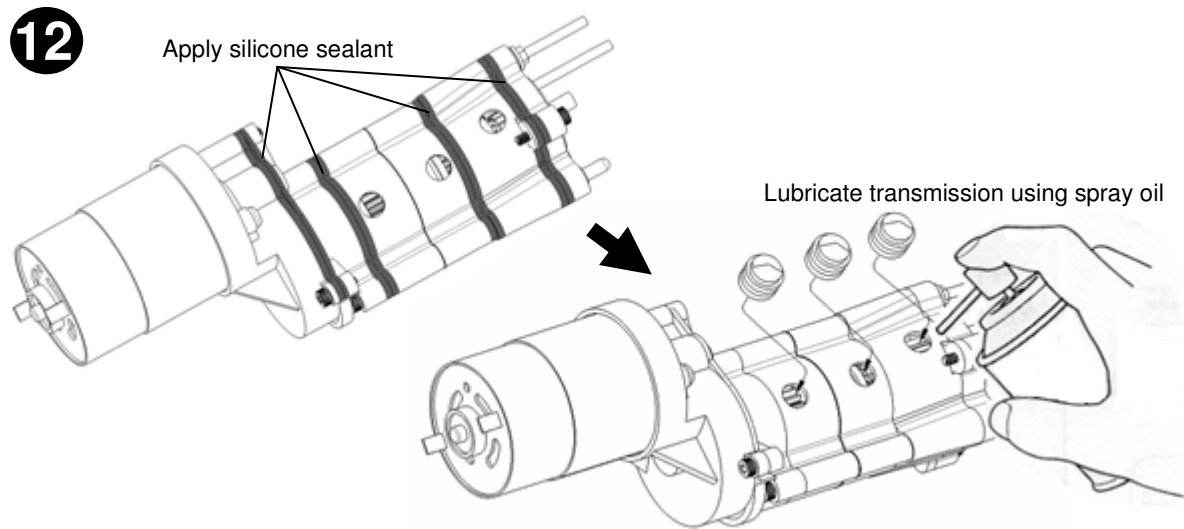
- 4x11mm screw x2

OPTIONS

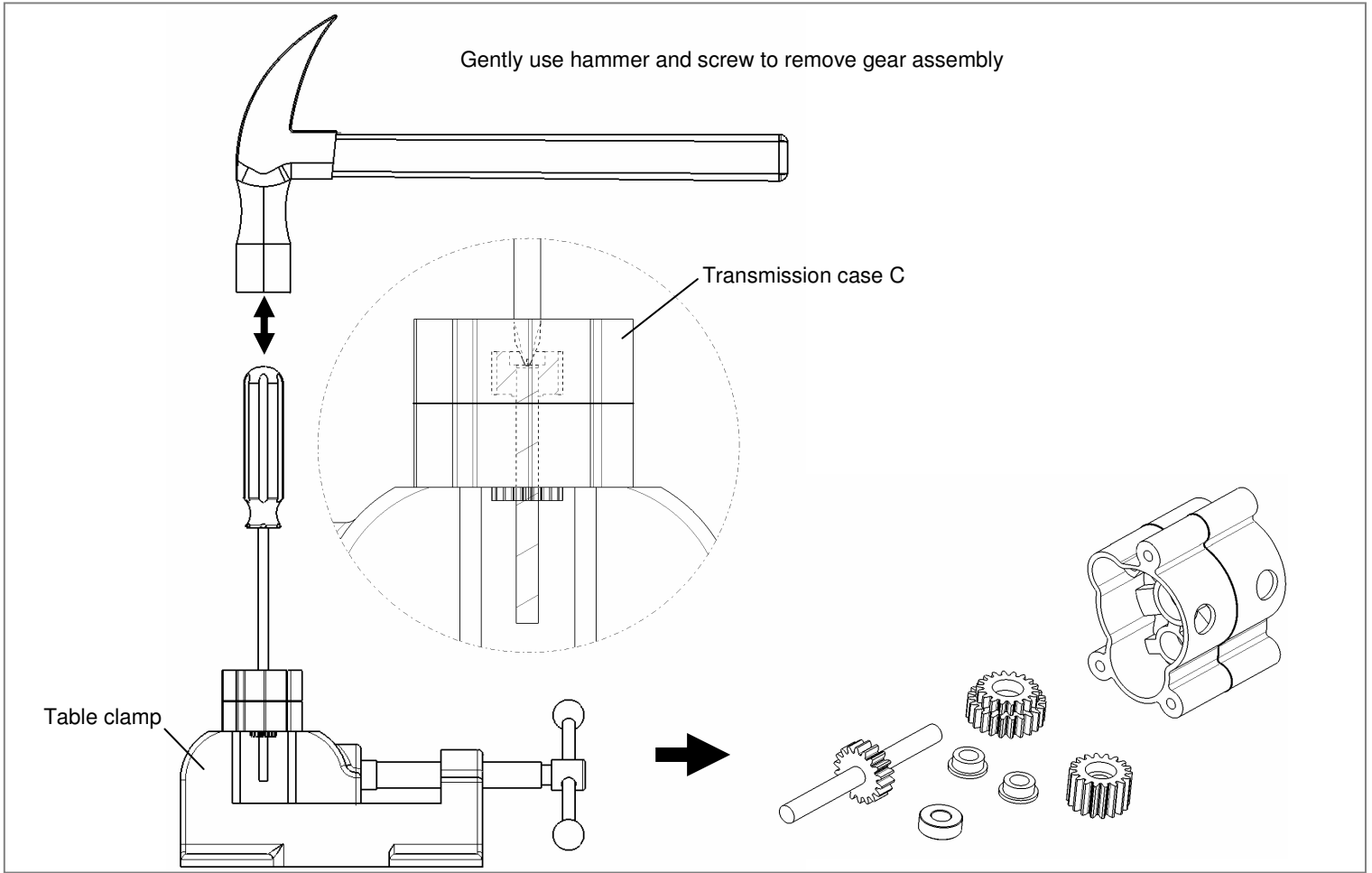


12

Silicone sealant will prevent dirt entering transmission and will keep oil from leaking. Make sure not to apply silicone on gears and moving parts.



# Transmission case C disassembly



# Transmission case C assembly

